

Product fiche



GE
Industrial Solutions

Market: Middle East & Africa

Moulded Case Circuit Breaker

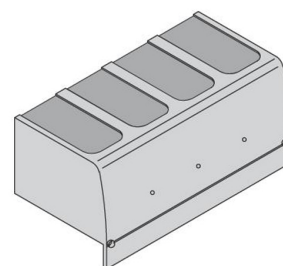
Industrial Components > Moulded Case Circuit Breaker

Ref. No.: [435716](#) **Cat. No.:** FNJL3

FK-Protection Terminal shield long 3P

EAN13: 5050096357163

Representative image below



ORDER/DELIVERY STATUS

Status Active

SPECIFICATIONS

Series	Accessories
Range	Protection
Number of poles	3P
Frame type	K frame (800A/1250 A/1600A)
Type of Accessory	Terminal shields
Accessory Detail	Long terminal shield
Measurements	123.5x210x140 mm
Standard packing	1

DIMENSIONS

Weight 1 kg

CLASSIFICATION

ETIM 5.0 EC002035

CAD COMMERCIAL DRAWINGS

3D Files [stp](#)

<http://uk.geindustrial.com>

Created on: 25/01/2016

Product fiche



GE
Industrial Solutions

Ref. No.: [435716](#)

FK-Protection Terminal shield long 3P

[stp](#)

3D Files - interactive 3D view in PDF format

[pdf](#)

ADDITIONAL RESOURCES

[More info on website](#)

DESCRIPTION

Terminal shields

Terminal shields are installed on the incoming or outgoing side of the breaker thus achieving a heightened protection degree, independent of the type of connection used. For fixed breakers with rear connection or the plug-in or withdrawable versions of the Record Plus™ breaker the installation of short terminal shields is mandatory and they are normally supplied as part of the kit.

<http://uk.geindustrial.com>

Created on: 25/01/2016