

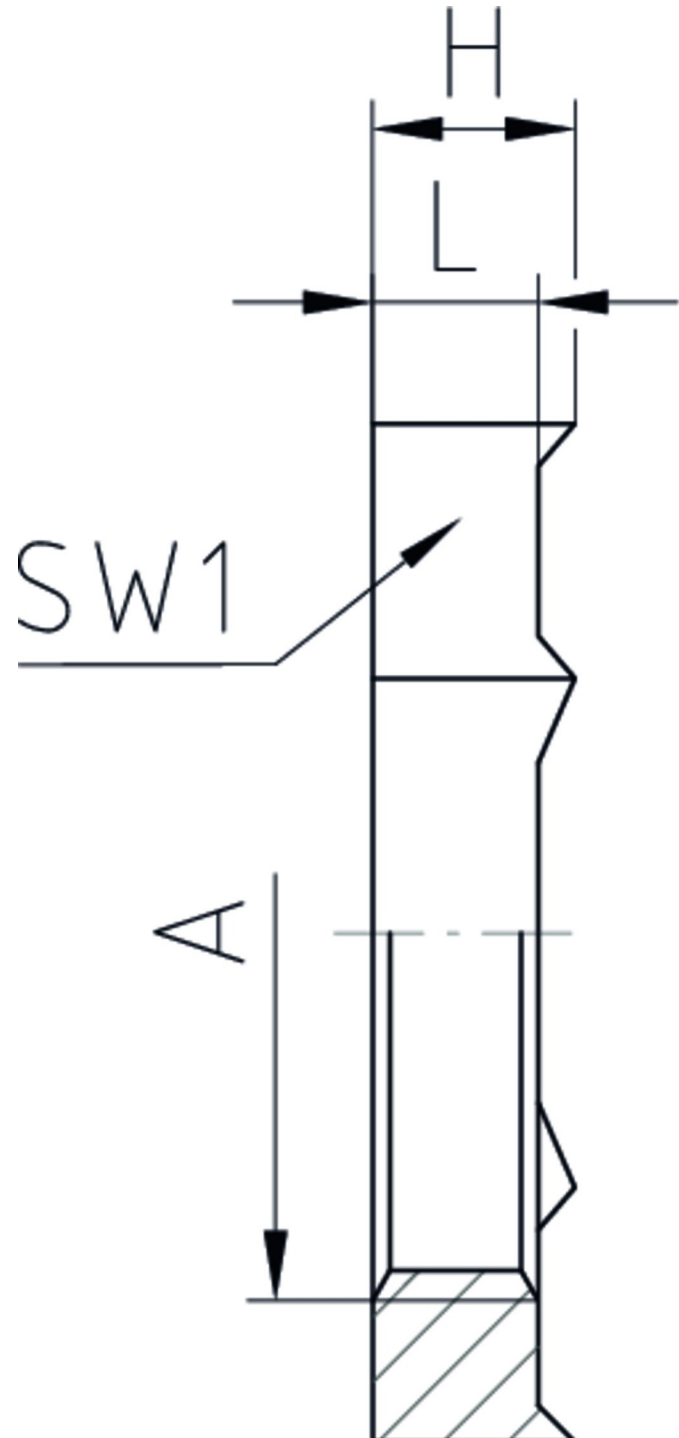
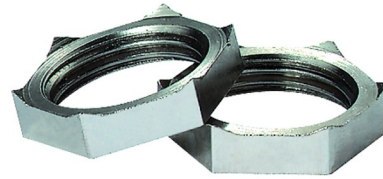
Hexagonal locknut

50.2xx MPOT

Hexagonal locknut	Brass CuZn39Pb3, nickel-plated
Internal thread	metric, as per EN 60423

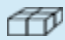
Properties

	<ul style="list-style-type: none">• for secure tightening of EMC-cable glands,• to cut through paint layers or powder coatings ensuring optimal contact for equipotential bonding,• increased vibration resistance
Temperature range (°C)	-60 +200



Features

with cutting edges

A	L	SW1	H		Part No.
M12x1,5	4,5	15	5,5	100	50.212 MPOT
M16x1,5	4,5	19	5,5	100	50.216 MPOT
M20x1,5	4,5	24	5,5	100	50.220 MPOT
M25x1,5	4,5	30	5,5	100	50.225 MPOT
M32x1,5	4,5	36	5,5	100	50.232 MPOT
M40x1,5	5	46	6	50	50.240 MPOT
M50x1,5	5	60	6	50	50.250 MPOT
M63x1,5	6	70	7	50	50.263 MPOT