

Product data

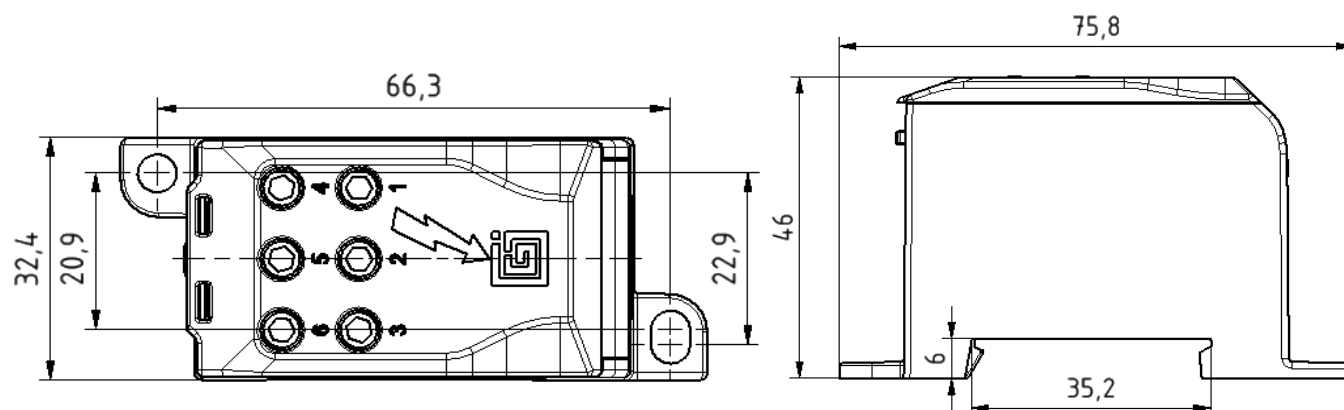
Product code	VG03-0006	STK-code	1912009	EAN-code	6410019120097
Product name	OJL-connector 200				
Wires	1xAl/Cu (10-70mm²)/ 6x(2,5-16mm²)				

Technical data

Nominal current	Cu	200	A
	Al	160	A
Nominal voltage		1000	V
Max. Current (US)	Cu	-	A
	Al	-	A
Max. Voltage (US)		-	V
Number of pole		1	pcs
Max. Cross section		70	mm ²
Tightening torque	50-70 mm ²	10	Nm
	25-35 mm ²	6	Nm
	2,5-16 mm ²	3	Nm
	-	-	Nm
Max. Operating temperature		80	°C
Weight		84	g
IP-protection		IP20	
Standards	EN 61238-1:2003; EN 60947-7-1:2009		
Color/ Material	Grey Cover, Grey Housing RAL 7035		
Mounting/ Connection	DIN-rail and screw mounting		


Description

The Single pole distribution block for branching connection. The single pole distribution block are compact and it will distribute the current through 6 output cables.

Drawing

Package

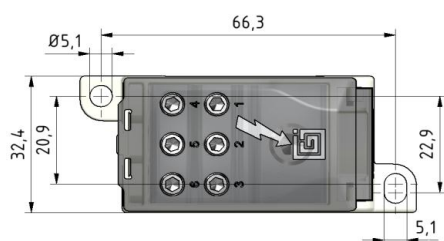
Package	Box	pcs/ package	24	Weight [Kg]	2,20
Length [mm]	210	Width [mm]	155	Height [mm]	105

Product data

Product code	Product name	$I_{n\ Al}$	$I_{n\ Cu}$	U_n	$I_{max\ Al}$	$I_{max\ Cu}$	U_{max}
VG03-0006	OJL-connector 200	160 A	200 A	1000 V	-	-	-

Installation

Type	DIN-rail and screw mounting
------	-----------------------------

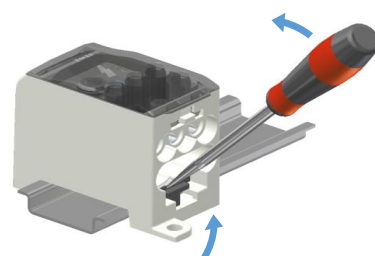


Mounting with screw.
Max. Ø 5



DIN-rail mounting



Set the connector to DIN-rail.
See picture.
Push until "click"



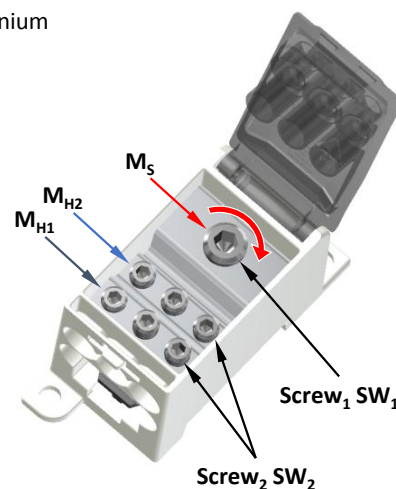
Removing from DIN-rail

Release the slider part with screwdriver. Lift the connector.

Connection

Screw size		Screw 1	M10	Tightening torque M	50-70 mm ²	10 Nm	Stripping length (input) L ₁	20 mm
		SW ₁	5	(M _s / M _{H1} / M _{H2})	25-35 mm ²	6 Nm	(output) L ₂	12 mm
		Screw 2	M6		2,5-16 mm ²	3 Nm		
		SW ₂	3		-	-		
		Screw 3	-	Max. Input cable		70 mm ²		
		SW ₃	-	Max. Output cable		16 mm ²		
								

Connect the **input** conductor when cover is open. Can be used for both copper- or aluminium conductors. Note! The Aluminium conductor is allowed only one conductor/one space. With the Al-conductors, it's recommended to use anti-corrosion paste. (i.e. Penetrox) We recommend a ferrule when using a fine-stranded conductor.



The branching conductors **H1** and **H2** can be connected also when the cover is closed. Note! It's allowed use only Cu-conductors for branching.

Cross-section of conductors and number of conductors/ space. (S / H1 / H2)

[illegible]