

**Product data**

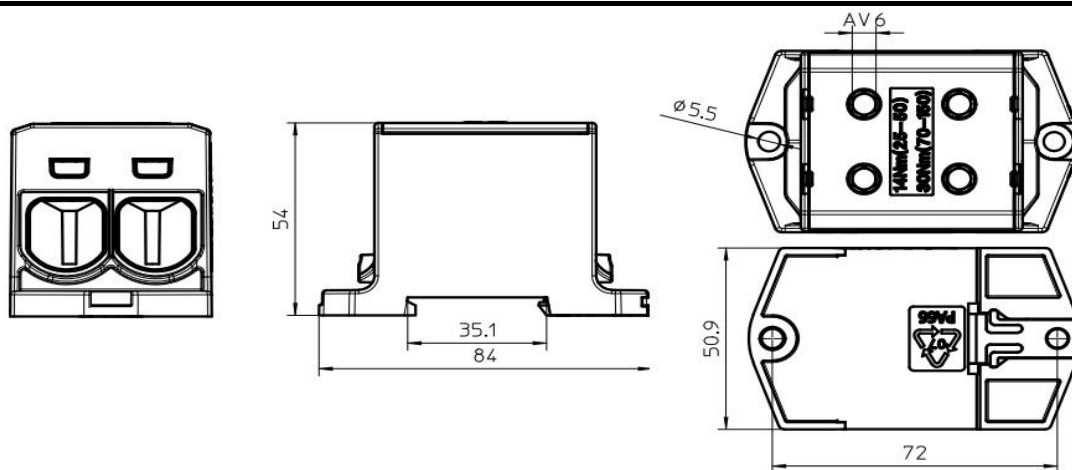
Product code	<b>VC05-0033</b>	STK-code	<b>1914129</b>	EAN-code	<b>6410019141290</b>
Product name	OTL-connector 2xAl/Cu 150mm <sup>2</sup> (Yellow/Green)				
Wires	2xAl/Cu 150mm <sup>2</sup>				

**Technical data**

Nominal current	Cu	<b>640</b>	A
	Al	<b>580</b>	A
Nominal voltage		<b>1000</b>	V
Max. Current (US)	Cu	-	A
	Al	-	A
Max. Voltage (US)		-	V
Number of pole		<b>1</b>	pcs
Max. Cross section		<b>150</b>	mm <sup>2</sup>
Tightening torque	25-50 mm <sup>2</sup>	<b>14</b>	Nm
	70-150 mm <sup>2</sup>	<b>30</b>	Nm
	-	-	Nm
	-	-	Nm
Max. Operating temperature		<b>80</b>	°C
Weight		<b>170</b>	g
IP-protection		<b>IP20</b>	
Standards	<b>EN 61238-1; EN60947-7-1</b>		
Color/ Material	<b>Green RAL 6018, Yellow RAL 1016/ PA66-V0</b>		
Mounting/ Connection	<b>DIN-rail and screw (M5) mounting</b>		


**Description**

OTL-connectors are designed to be used connecting and branching aluminium and copper conductors. The body is made of tin plated aluminium.

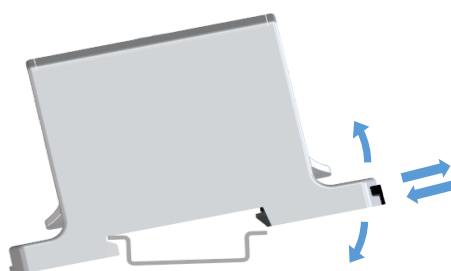
**Drawing**

**Package**

Package	<b>Box</b>	Pcs / Package	<b>5</b>	Weight [kg]	<b>0,90</b>
Length [mm]	<b>210</b>	Width [mm]	<b>155</b>	Height [mm]	<b>105</b>

Product data							
Product code	Product name	$I_n$ Al	$I_n$ Cu	$U_n$	US specific		
					$I_{max}$ Al	$I_{max}$ Cu	$U_{max}$
<b>VC05-0031</b>	OTL-connector 2xAl/Cu 150mm <sup>2</sup> (Grey)	580 A	640 A	1000 V	-	-	-
<b>VC05-0032</b>	OTL-connector 2xAl/Cu 150mm <sup>2</sup> (Blue)	580 A	640 A	1000 V	-	-	-
<b>VC05-0033</b>	OTL-connector 2xAl/Cu 150mm <sup>2</sup> (Yellow/Green)	580 A	640 A	1000 V	-	-	-

## Installation

Type	DIN-rail and screw (M5) mounting
------	----------------------------------

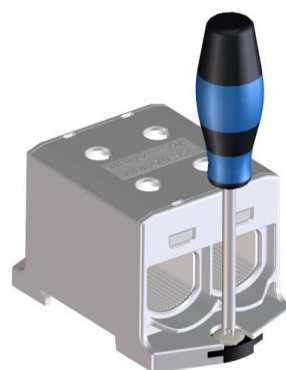


### DIN-rail mounting

Set the connector to DIN-rail.  
See picture. Push until "click"

### Removing

Release the slider and lift connector


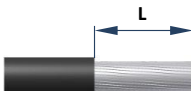


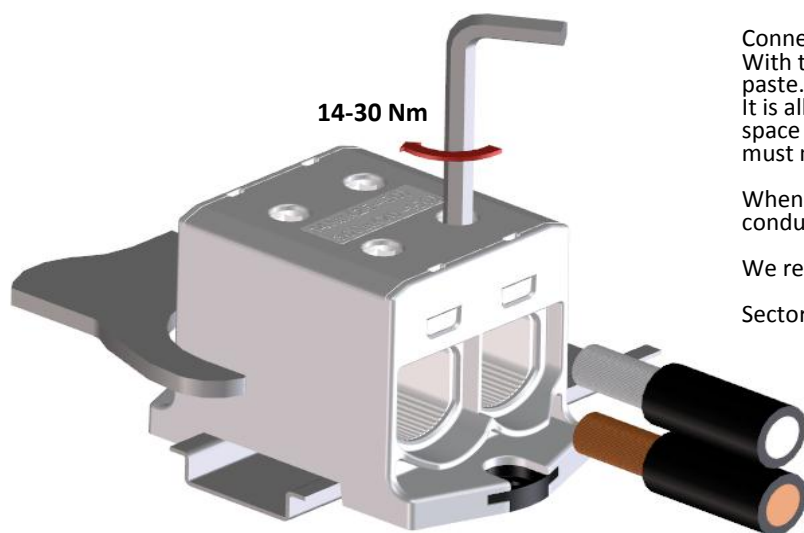
### Screw mounting

Use max. Ø5 mm screw.  
See picture .



## Connection

Screw  	Thread	M16	Tightening torque	25-50 mm²	14 Nm	Stripping length L 	20 mm
	SW	6		70-150 mm²	30 Nm		
				-	-		
				-	-		
	Max. Wire cross section			150 mm²			



### Installation

Connector can be used for both **copper- or aluminium conductors**.  
With the Al-conductors, It's recommended to use anti-corrosion paste. (e.g. Penetrox).  
It is allowed to use max. of three adjacent cross sections in one space (Copper conductors). The nominal max. cross-section value must not be exceeded.

When used Al-conductors, it is allowed to use only one conductor/space.

We recommend a ferrule when using a fine-stranded conductor.

Sector shaped conductors must be pre-rounded before installation.

Each protective or neutral conductor must have their own conductor space. SFS 6000:2007 clause 810.7

## Cross section and max. number of Cu- conductors / space (Al- conductors in parenthesis)

1,5 mm2	2,5 mm2	6 mm2	10 mm2	16 mm2	25 mm2	35 mm2	50 mm2	The specified max. amount of conductors refers only to industrially installed terminals.			
-	-	-	-	-	<b>3 (1)</b>	<b>3 (1)</b>	<b>3 (1)</b>				
				70 mm2	95 mm2	120 mm2	150 mm2	185 mm2	240 mm2	300 mm2	400 mm2
				<b>2 (1)</b>	<b>1 (1)</b>	<b>1 (1)</b>	<b>1 (1)</b>	-	-	-	-